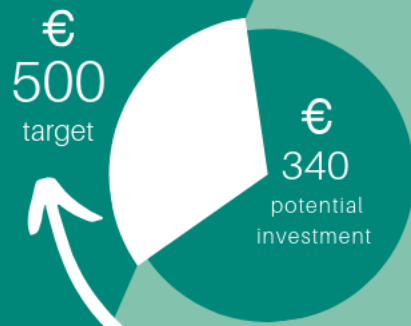


# Sharing Cities: Building smart cities together



## Platform



3

City-wide open data platforms



3

City-wide sustainable energy management systems

## People



1,700+ users on digital social markets



167 e-logistics vehicles



253 e-cars



299 e-charge points

## Place



1,700 planned eBikes



580 eBikes operational

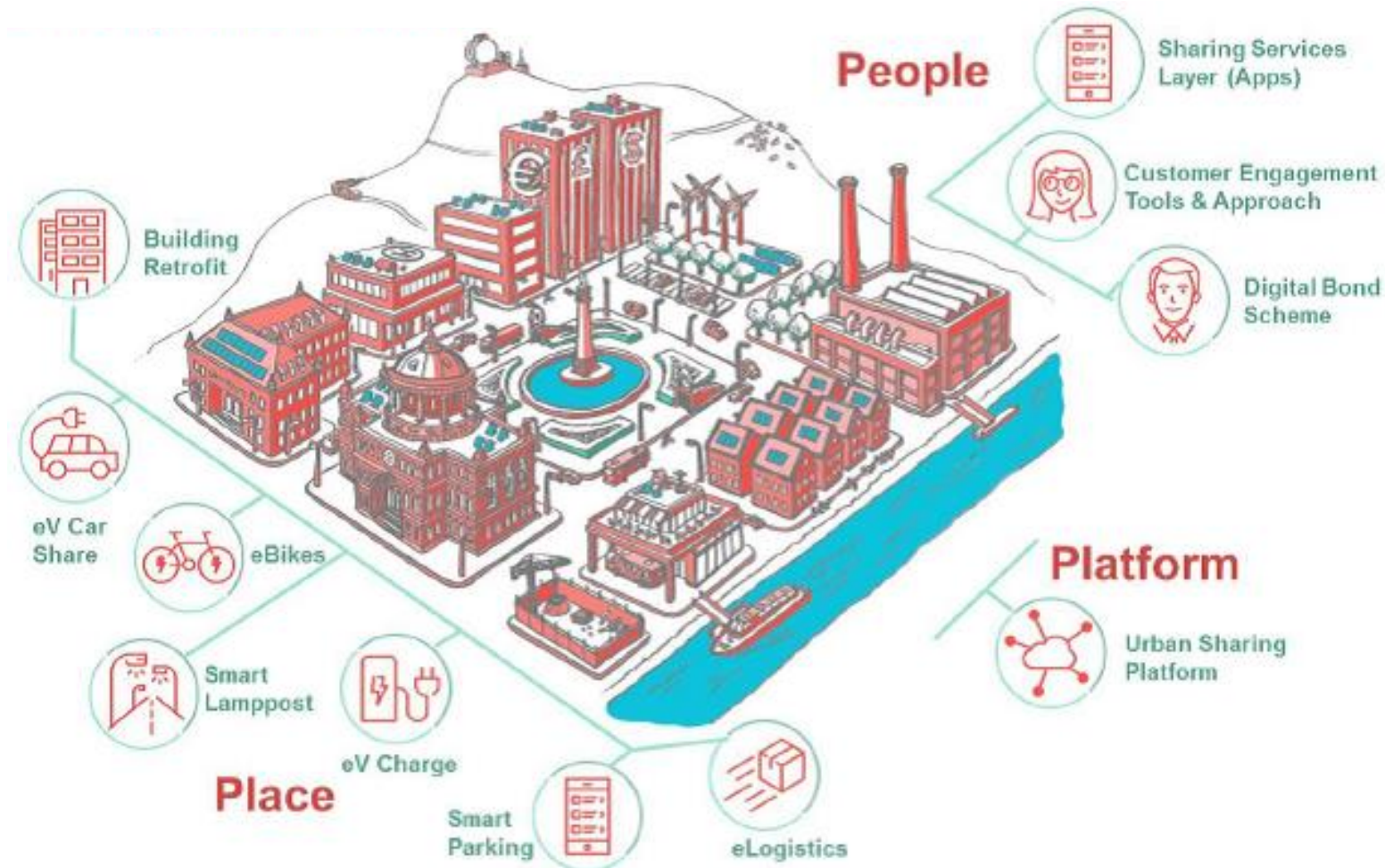
2,400 smart lampposts upgraded with sensors & LED lights



5,614,780 kWh per year reduction in energy in 3 cities

## Building resilience through smart technology

- The technological innovations and approaches from Smart Cities can help us make cities more resilient, through:
  - Evidence based decisions using data insights
  - Digital tools to support and maintain connection among communities
  - Low carbon technology to help mitigate the impact on climate change, reduce our footprint, optimise the way we use our resources (energy, water, food)



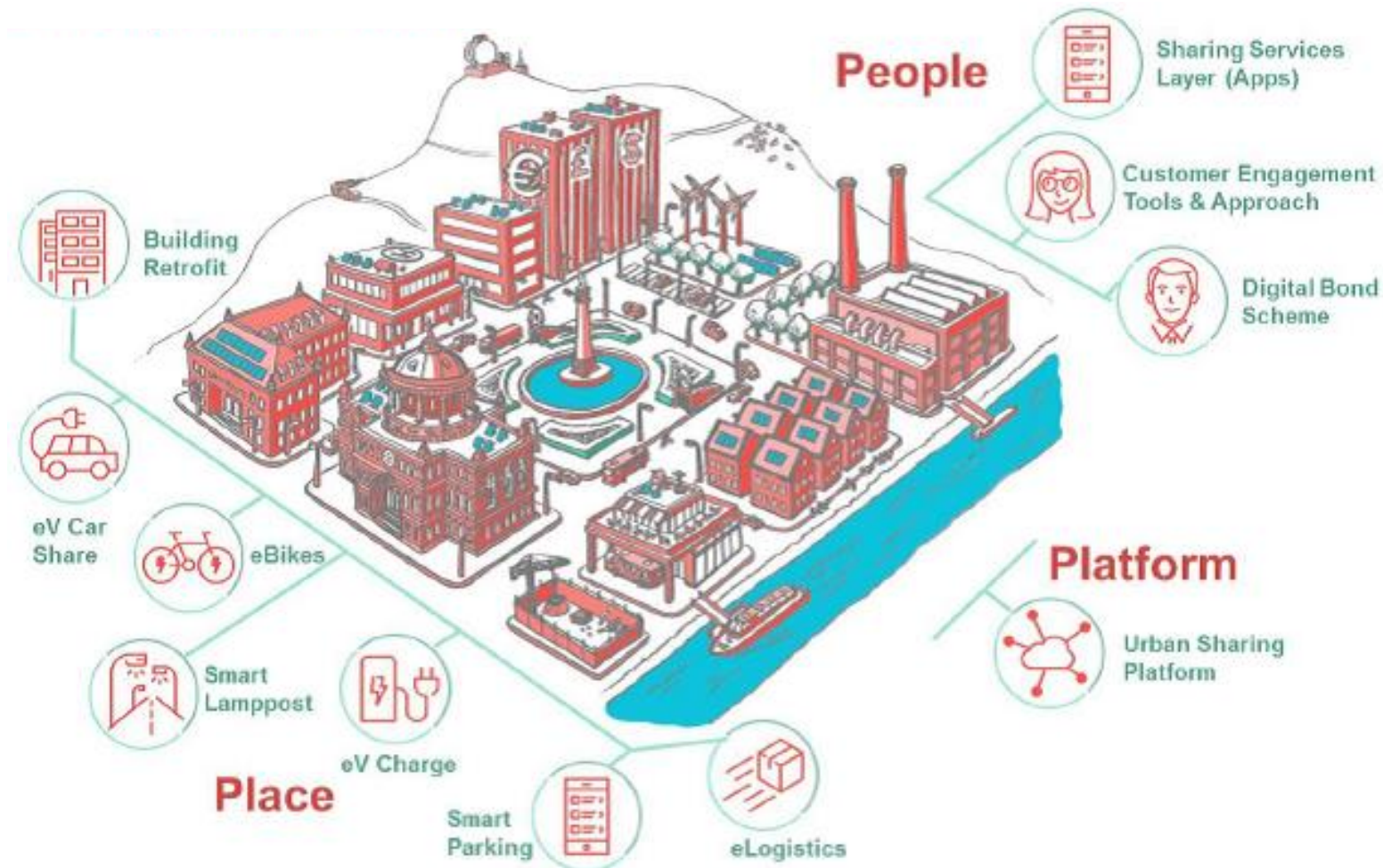
## Putting a recovery lens on Sharing Cities measures

Digital Engagement and behaviour change – the Digital Social Market

Street sensors – Smart lampposts, air quality and parking sensors

Energy efficiency - building retrofits and sustainable energy management systems

Digital districts – smart local neighborhoods





1,760 users signed up



Over 5,490 stories have been shared

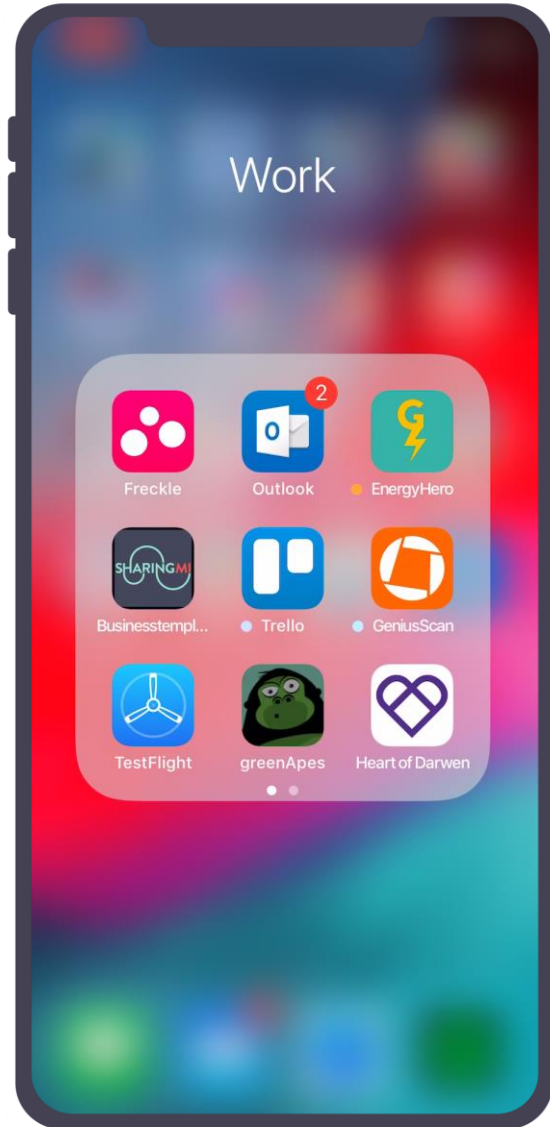


Over 23,400 claps were sent

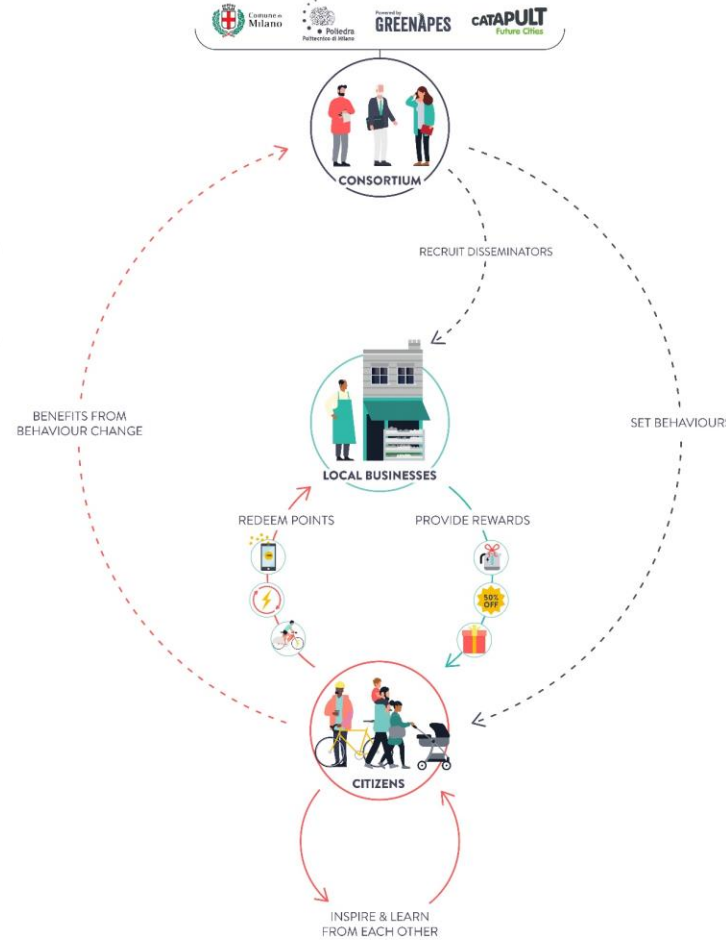


70+ rewards claimed so far

### SharingMi Platform:



### DSM Framework:



SharingMi promotes solutions for more sustainable lifestyles by rewarding the citizens of Milan for their positive actions that contribute to improving the city.

#### Localisation

SharingMi **convenes an online community** of users passionate about **city-wide sustainability-focused issues**. It **incentivises and rewards** users for sharing stories and **participating in city challenges**.

#### Business Model & Governance

SharingMi is led by Poliedra and the Municipality of Milan, with the subcontracting of the technical components (the platform) to greenApes / NEU and the support of local WP2 partners and Future Cities Catapult.

#### Onboarding

The team has co-defined a comprehensive service and onboarding proposition for SharingMi which includes a suite of printed and digital **brand assets**, a **VIP testing group**, a **social media strategy**, organisation and participation in promotional and **launch events**, **recruitment of local businesses**.

#### Consortium Partners

SharingMi is led by Poliedra – Politecnico di Milano, powered by greenApes and supported by Future Cities Catapult, NEU and the Municipality of Milan.

#### Stakeholders

The Municipality of Milan, Citizens & Citizen Interest Groups, Local and Online Businesses and Corporate Partners.

#### Maintenance

The team has sought to establish a long-lasting community which **reinforces the benefits of sustainable behaviours**, applies **gamification** through user challenges, **peer-to-peer knowledge exchange**, promotion and **support of city policies and events** such sustainability week, design week, plastic reduction and mobility week – the platform animates citizens via a **group moderator** who spreads up-to-date news.



## Finding New Purpose During COVID-19



### SharingMi resta a casa

La community di SharingMi resta a casa e ci racconta queste eco-settimane grazie a una nuova sfida!

[Leggi di più](#)



### SharingMi resta a casa con Legambiente

SharingMi resta a casa in compagnia di un amico speciale: il nuovo utente LegambienteMi!

8/4/20

[Leggi di più](#)

## Optimizing Energy Systems at scale

**COVID-19 has transformed the way we use our buildings – commercial, public, and residential.**



### Building retrofit

Install energy efficient measures in existing public, social and private building stock. This can link to other solutions like the integrated energy management system to optimise energy performance.



### Digital Community Engagement

Shift perceptions and change behaviours towards sustainable smart city services through rewards in exchange for continued and improved citizen engagement.



### Sustainable energy management systems

An advanced controls system and interface that integrates and optimises performance of energy assets in a district to support sustainable energy management.

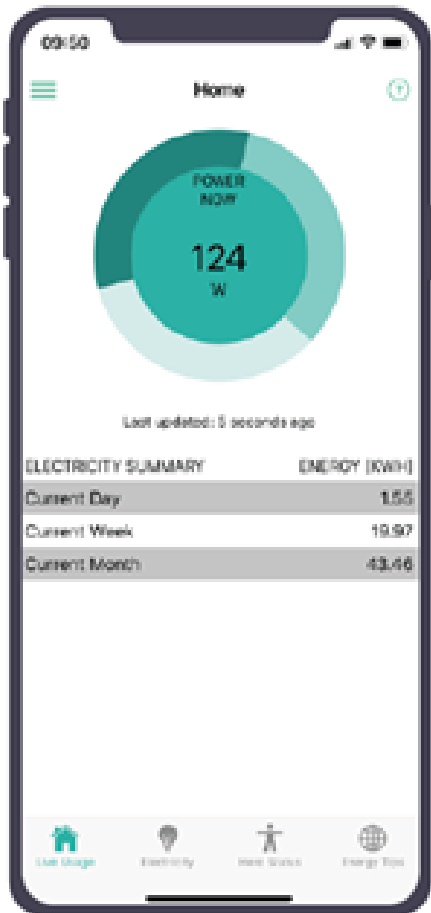




# Your guide to Greenwich Energy Hero

Everything you need to know about this 12 month  
pilot scheme from set-up to success





09:50

Energy Tips

Smart plug sockets could help you save!

Use plug sockets that can be turned on and off via your phone, to make sure you switch unused appliances off, but leaving them on standby. You could use cheaper tariff plugs to schedule turning appliances off.

Don't boil a full kettle if you don't need to!

Over-filling the kettle is a big energy waste. If you boil the kettle twice a day and 18 litres when you only need 600ml, you could save £18 (at 30.2kg of CO2) by boiling only what you need.

It pays to upgrade!

Have you converted all your lightbulbs to LED yet? Estimates say that for a medium size house, they save £240 a year.

Get your feather duster out!

Have you ever cleaned your fridge?

Use Charge Electricity Home Status Energy Tips

